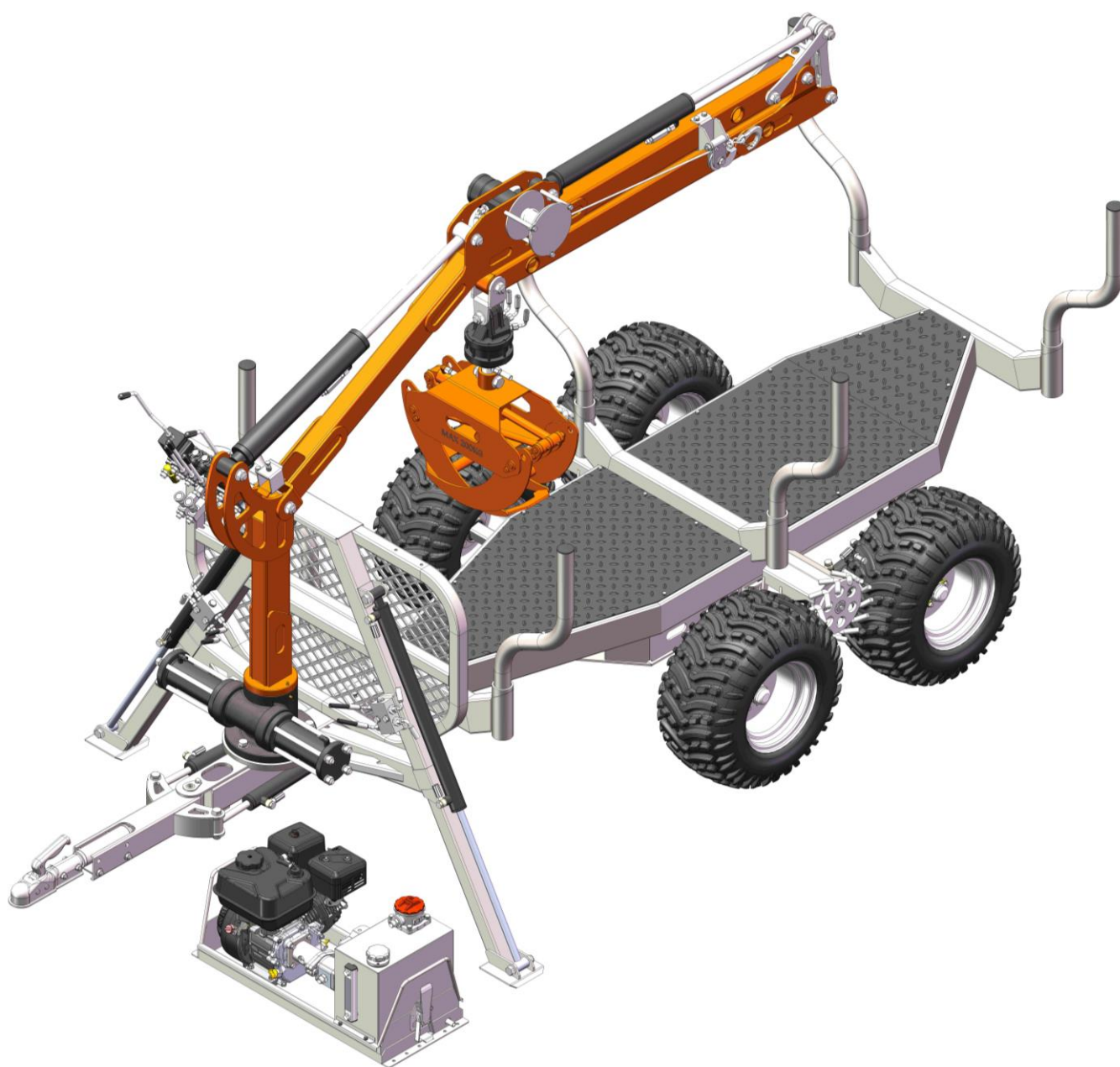


# Owner's Manual

## Crane LC350



# Table of Contents

INTRODUCTION.....	2
Crane Specification .....	4
Installation Instruction.....	5
Crane 350-II 4x4 Wheel-Drive System .....	11
Hydraulic Winch (Option) .....	12
Application .....	13
Multi-Control Valves .....	14
Service and Maintenance.....	15
Fault Diagnosis and Rule Out.....	16
Exploded View .....	17
1.LC350-01 Crane .....	18
LC350-01-45 Grappler.....	21
2.LC350-02 Support Frame .....	22
3.LC350-03 Multi-Way Control Valve.....	24
4.LC350-04 Front Protective Grid Frame .....	25
5.LC350-05 Steering auxiliary component .....	27
6.LC350-06 power unit.....	29
7.LC350-09 Wheel Carrier Assembly .....	31
8.LC350-10 Trailer main frame parts.....	33
NOTES.....	35

# INTRODUCTION

Congratulations on your purchase! This manual gives you the necessary information about your machine so you will be able to use it properly. The entire manual must be read and understood before you start using the machine. If any questions should arise that are not covered by this manual, please contact us.

## OWNER'S RECORD

Please take a moment to record the following information about your Crane Trailer. If you need to call for assistance, please be ready to provide your model and serial numbers. This information will allow us to help you more quickly when you call.

### MODEL NUMBER

### SERIAL NUMBER

### DATE OF PURCHASE

This machine is designed for certain applications only. We strongly recommend that this machine is not modified and/or used for any application other than that for which it was designed. If you have any questions relative to a particular application, DO NOT use the machine until you have first contacted us to determine if it can or should be performed on the product.

**Thank you for buying Crane LC350. We are continuously improving our quality, design and products range to satisfy customer demands.**

**Before start use the trailer, check the trailer for damage, make yourself familiar with the trailer and all essential part read this introduction manual step by step.**

**Start up the hydraulic unit and run it on a low speed, and try all hydraulic function without load and get use the controls, increase the speed slowly and start use the functions until you feel you are in control of the functions.**

#### **Common rules and safety**

- **Be assure that all instruction is followed.**
- **Only trained or experiences driver handle the trailer, never let under age handle the trailer.**
- **It's prohibited to have passenger on the trailer.**
- **Do not overload the vehicle against rules and regulations that the total weight or maximum load of the vehicle or trailer exceeds.**
- **Keep the center of gravity of the load over the wheels of the trailer.**
- **Do not exceed maximum speed 40km/h on flat roads, off road use common sense.**
- **And do not drive over sharp edges or in holes, that can damage wheels and the 4WD.**
- **When driving in ascent and descent, do not use frame steering be very gently and drive slowly and drive as straight as possible up or down hill never crossways and in wet condition that easily can make the wagon or vehicle to turn over sideways with heavy injury even death for people and big damages on equipment.**
- **Keep always a watch on the vehicle and trailer when any of the engines is running.**
- **Never use a trailer, and grease all points every second day of use or before long time with usage, control oil level continually.**

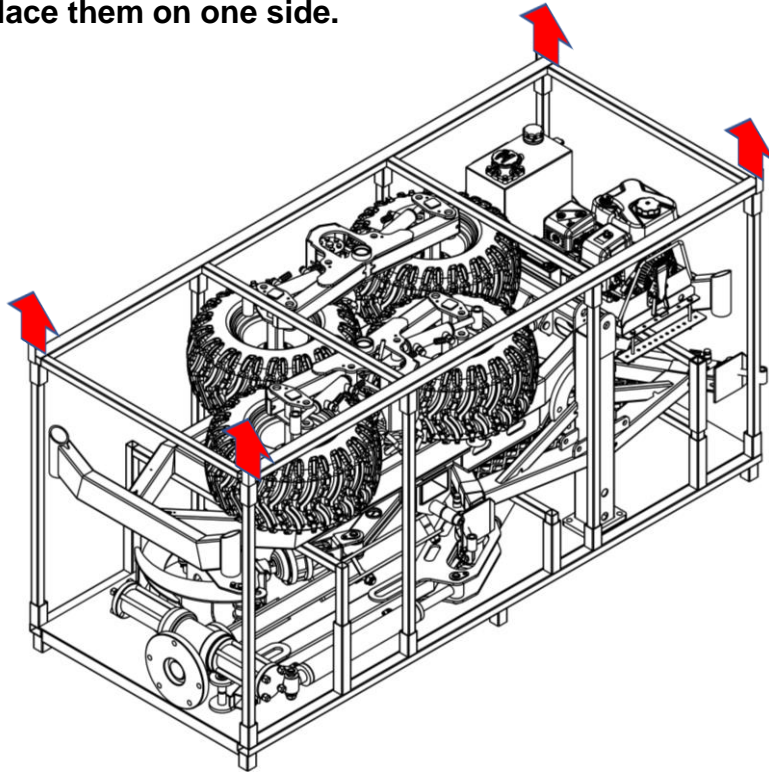
# Crane Specification

Crane LC350, mounted in the rear of ATVs or tractors, works as forest and farm machine. There are trailer, crane, hydraulic system, engine workshop etc. in crane. Option: hydraulic winch, hydraulic tipping box and bucket

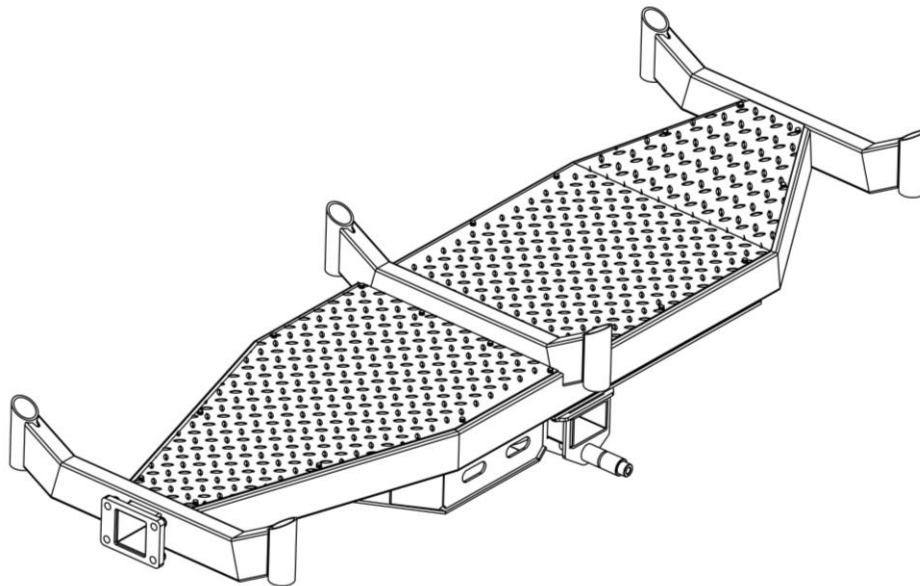
Items	Technical Data
<b>Gas Engine</b>	7HP electric and pull start, adjustable engine speed:1400- 3800rpm
<b>Oil Pump</b>	16Mpar, 3.4ML/R
<b>Hydraulic System</b>	Multi-Control Valves functions: <b>A.</b> Arm access <b>B.</b> Grappling movement: rotating, open and close, Lifting capacity of Max. reach: 200kg <b>C.</b> Supporting legs adjustable in height of 535mm <b>D.</b> Wheel drive driven by two pieces of orbital hydraulic motor <b>E.</b> Boom rotation 45°left and right (safely) when the beam in the middle. rotating 90°left and right (maximum)
<b>Working Temperature</b>	80C~-30°C
<b>Trailer Dimension</b>	Trailer weight(kg):260 Base between two supporting legs(m):1.6 Max. loading capacity(kg): 1500 Tire size: 22x11-10
<b>Crane Spec.</b>	Dimension including trailer (LWHm):3.7x1.4x1.5 Max. lifting height(m):4.5 Arm length(m): 3.5

# Installation Instruction

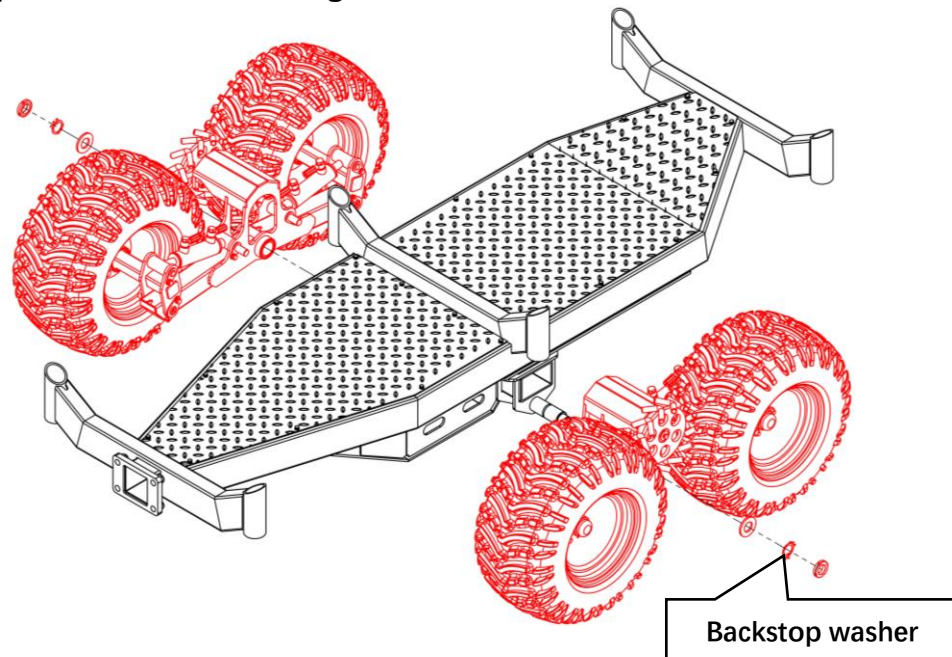
**Step 1: Place the packing box on a flat ground, remove the protective film outside the packing box and take off the top cover of the packing box in the direction of the arrow in the figure, take out the parts in the packing box and place them on one side.**



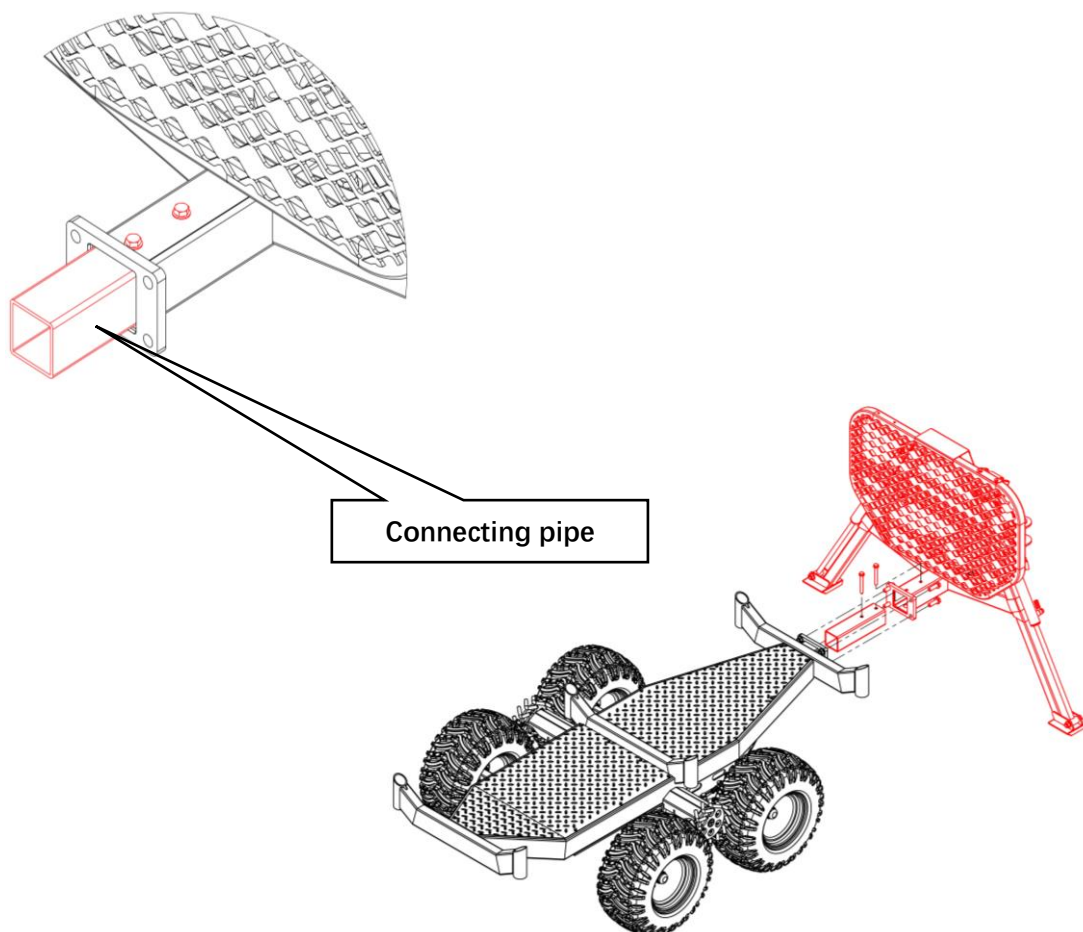
**Step 2: First place the trailer main frame in the assembly area.**



**Step 3: Assemble the left and right wheel frame components in turn as shown in the figure. After tightening M30 round nut, be sure to clamp the backstop washer into the nut groove.**

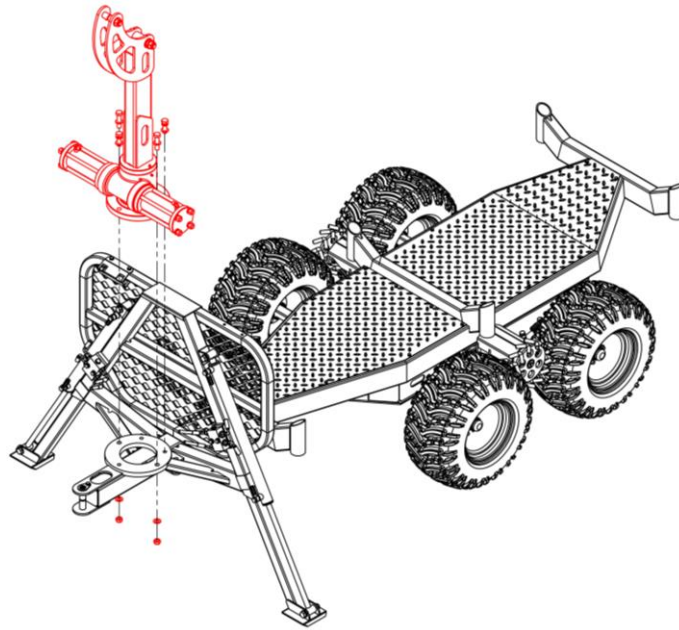


**Step 4: First, bolt the connecting pipe and the protective net frame together, and then connect it to the main frame of the trailer.**

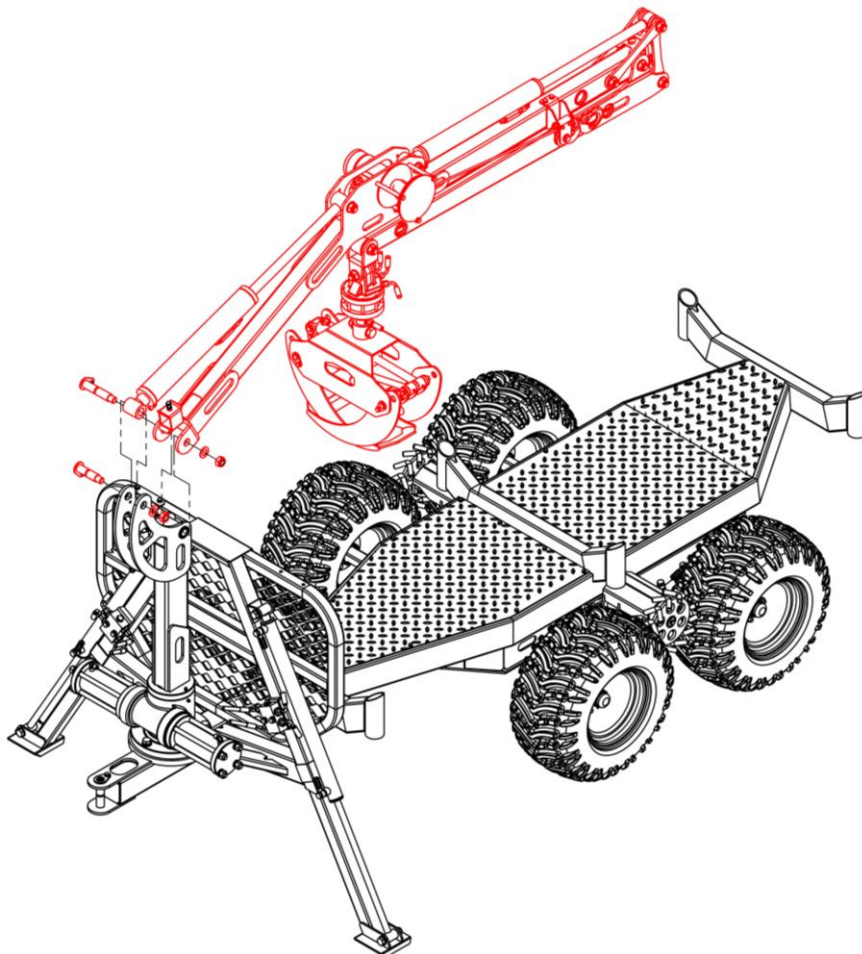




**Step 5: Assemble the support arm**

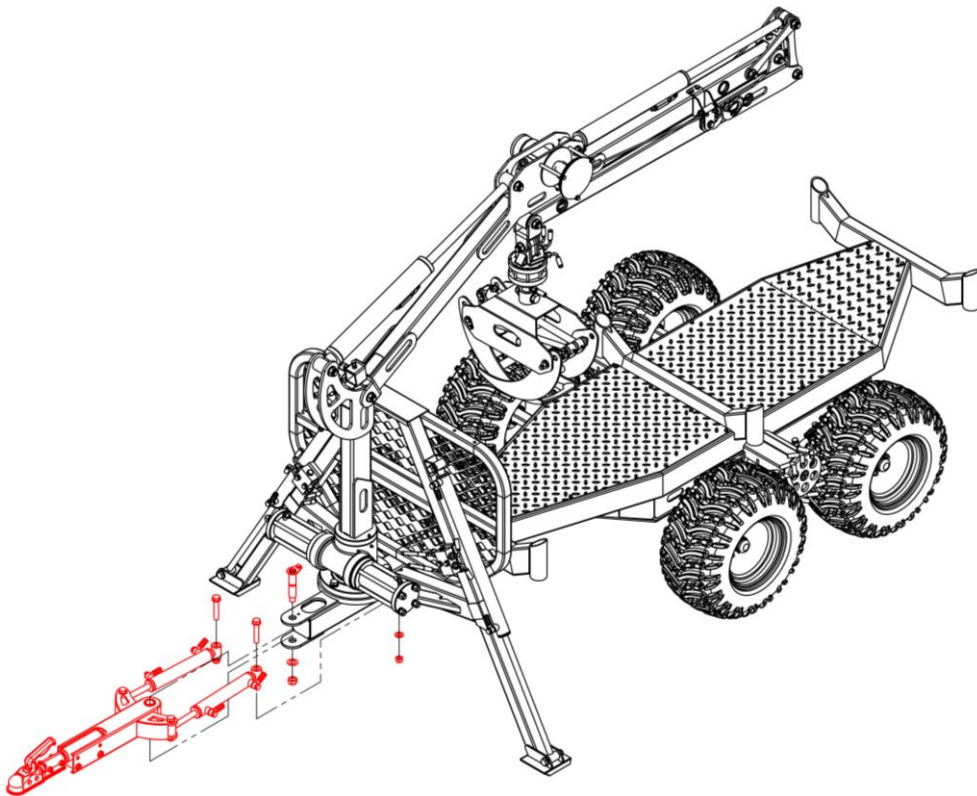


**Step 6: Assembling the Crane Boom**

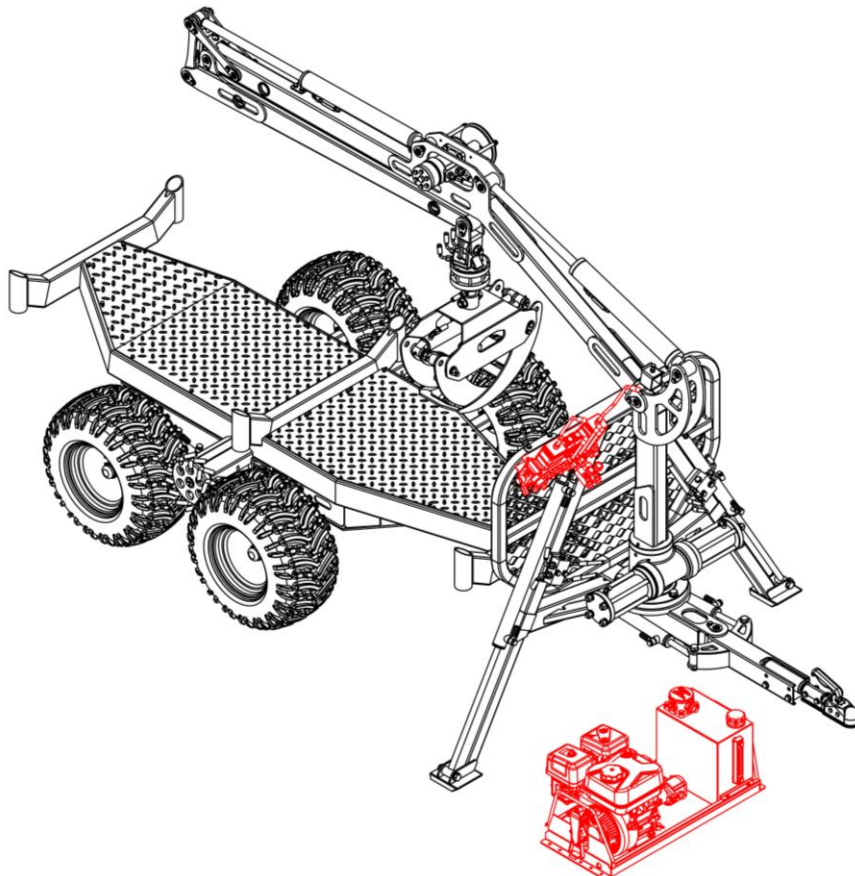




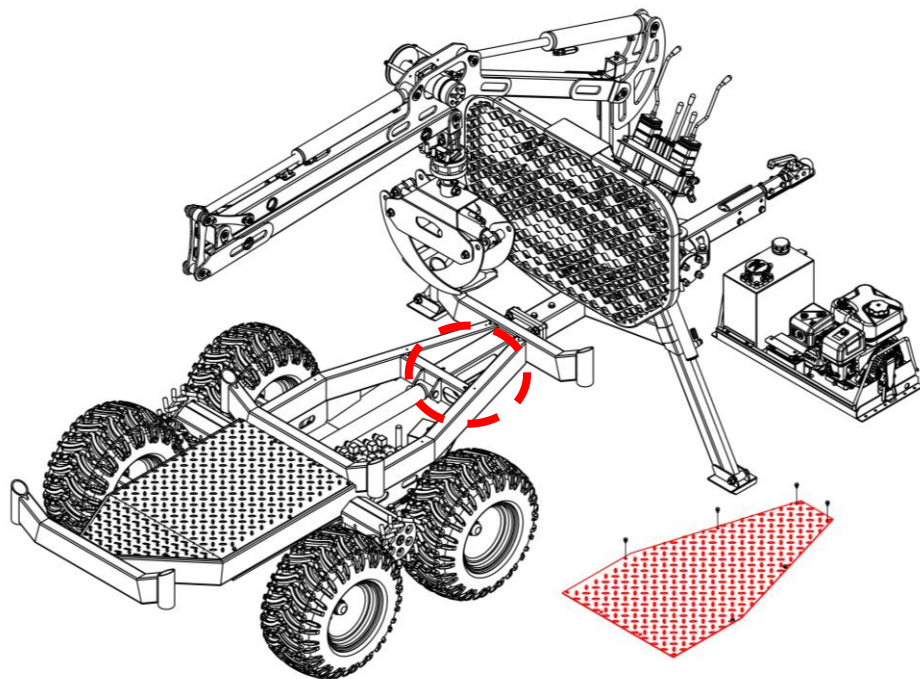
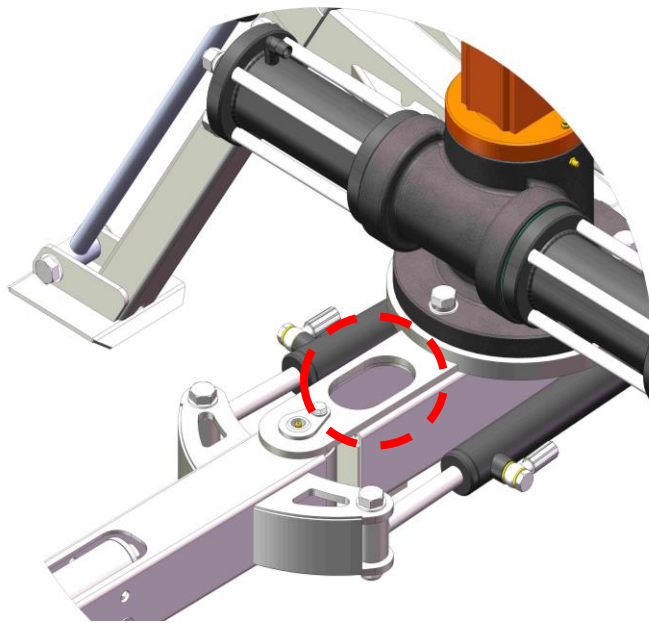
**Step 7: Assembly of auxiliary steering components.**



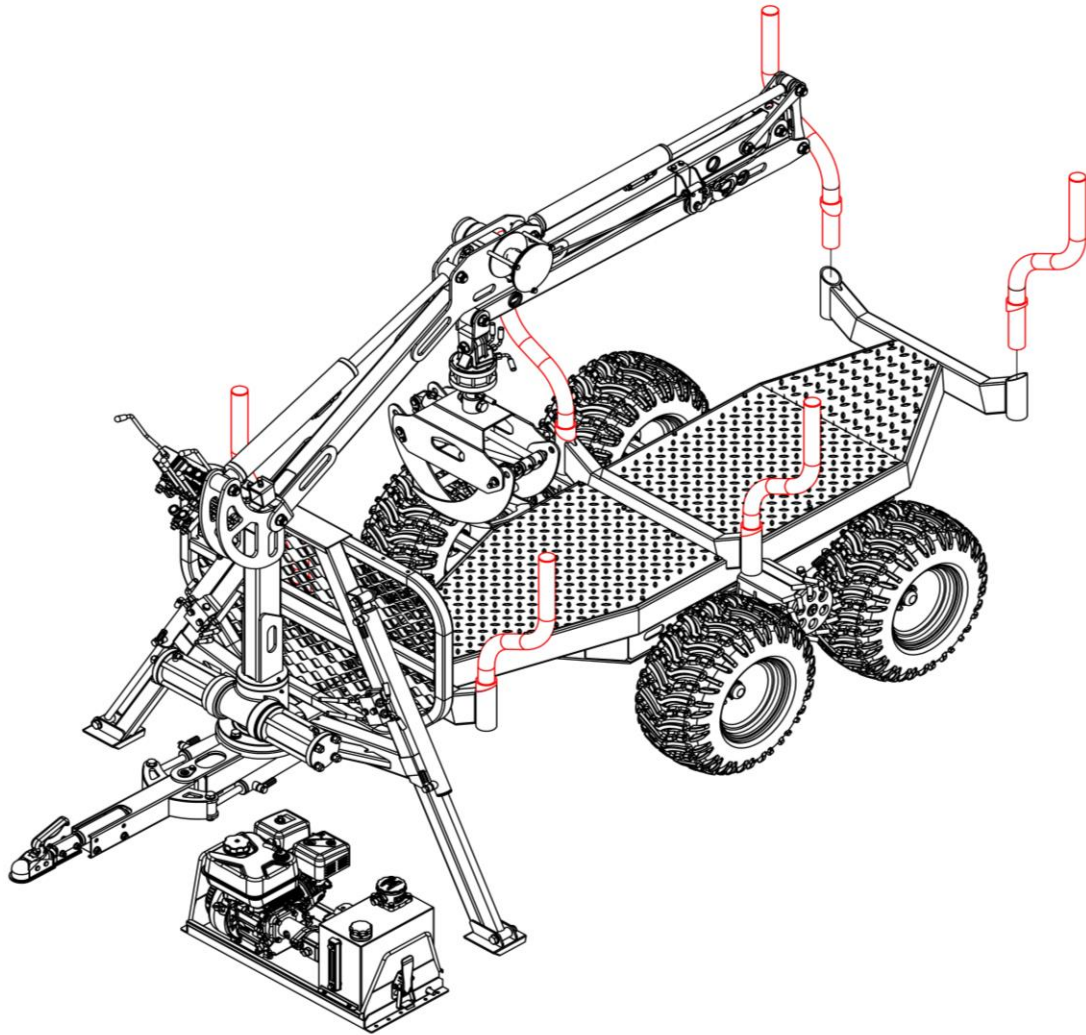
**Step 8: Install power unit, multi-way control valve in place.**



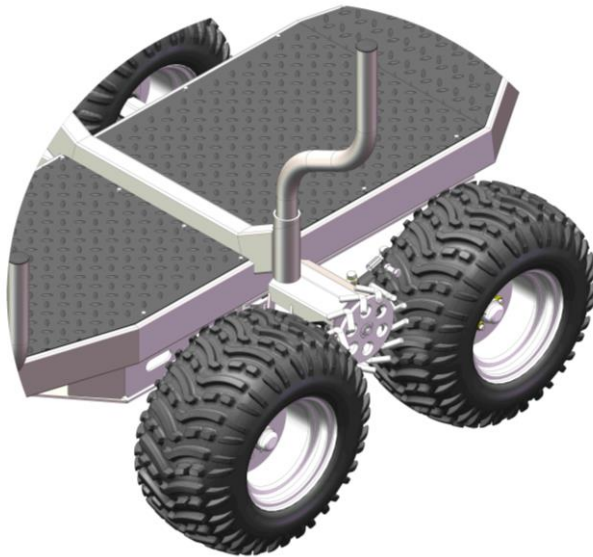
**Step 9: Open the front cover of the trailer, put the oil pipes out or in through the pipes, connect them together according to the corresponding labels on the oil pipes and joints, and then tighten the bolts after installing the cover.**



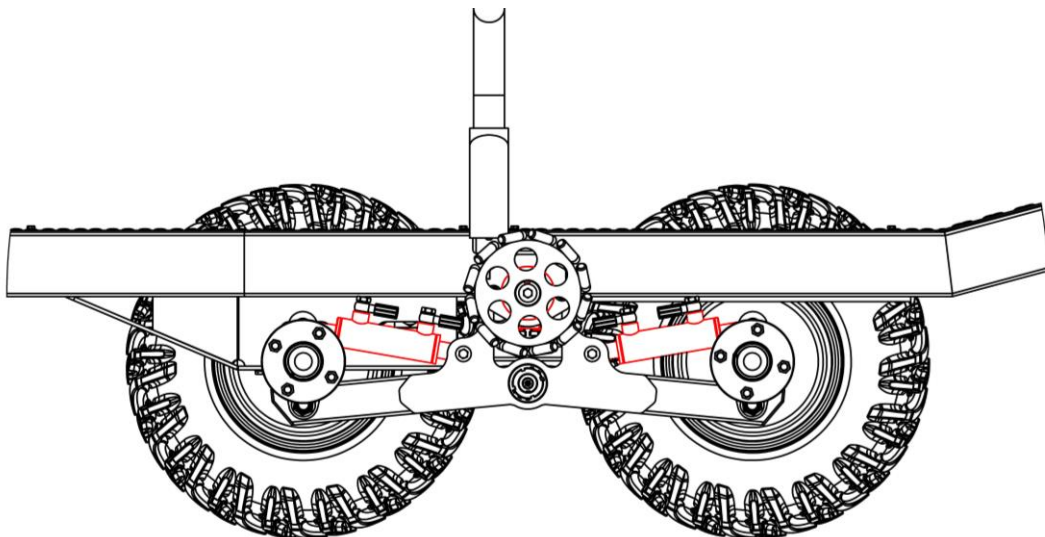
**Step 10: Mount 6 sets of protective tubes on the trailer.**



# Crane 350-II 4x4 Wheel-Drive System



If you choose a trailer with a 4X4-wheel drive system, in addition to assembling the trailer with the wheel frame, you need to connect the oil cylinder of the drive system and the oil pipe of the motor to the hydraulic system of the trailer, as shown in the following figure:



- **Please read the following before applying wheel-drive system.**

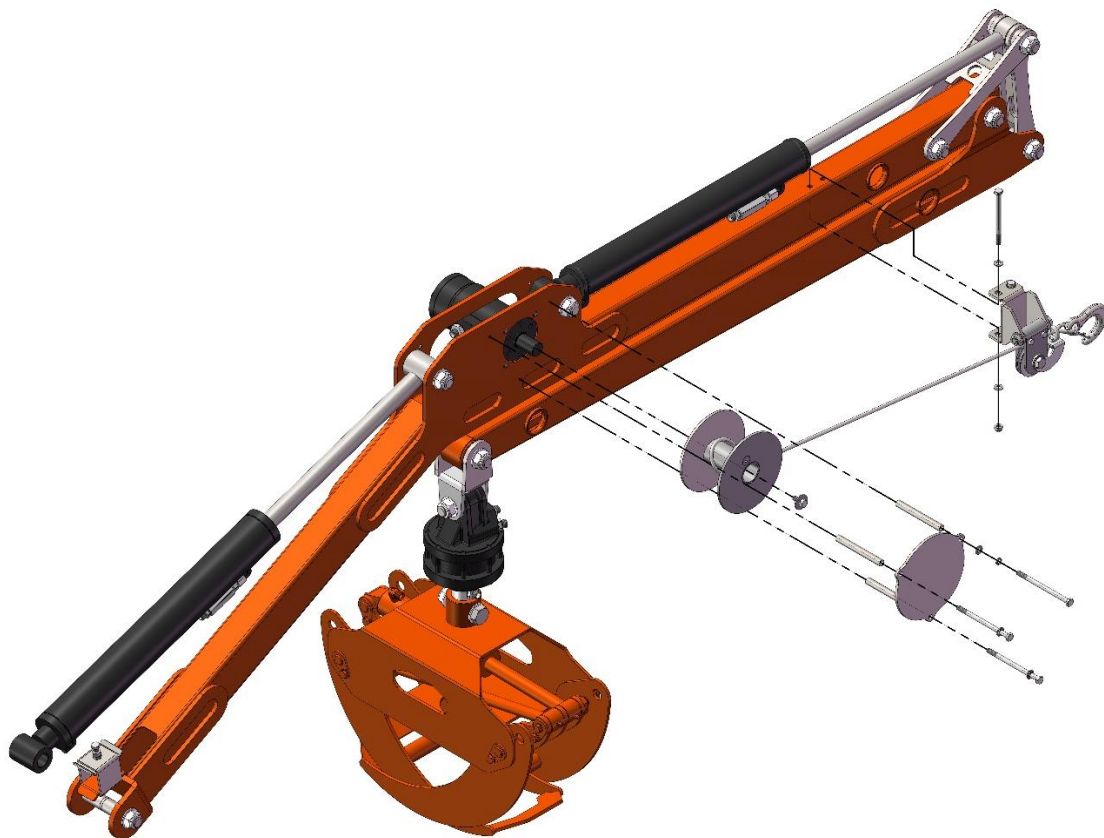
1. Start the engine, the speed is over 70%.
2. Push switch, driving wheel working (forward, back, join in or off).
3. To ensure sufficient power in engine battery and remote control battery power will affect work of wheel-drive system.

⚠ When Use the system, non-stand in front and rear of crane.



# Hydraulic Winch (Option)

Hydraulic Winch Spec.	<ul style="list-style-type: none"><li>● Remote control: waterproof</li><li>● Remote control area: 25M</li><li>● Rated line pull: 800KG</li><li>● Speed: 10-25m/min</li></ul>
--------------------------	--



# Application

- **Please check the following before applying for crane.**

- 1、 Connecting axles and tablets are in proper positions, nuts are tightened.
- 2、 Fill anti-wear hydraulic oil to two- thirds of oil level in fuel tank. (In cold area, pls use cold temperature resistant hydraulic.
- 3、 Fill oil in the middle of dipstick. Fill gas in engine. Do not overflow.
- 4、 Lay out hoses in proper position, screw up nuts.

- **Engine starting: (See engine instruction manual).**

- **General information about application.**

Drive smoothly and reduce loading until you can completely control cranes. Picking up heavy weights far from side of trailers that will increase pressure to cranes, it shortens the lifting capacity of crane significantly.

Pressure of oil pump is about 12Mpar-14Mpar, Max. working pressure is 16Mpar not recommended to adjust pressure for a strong turn.

- **Warranty**

Warranty's period and coverage is set by importers, distributors ani dealerships.

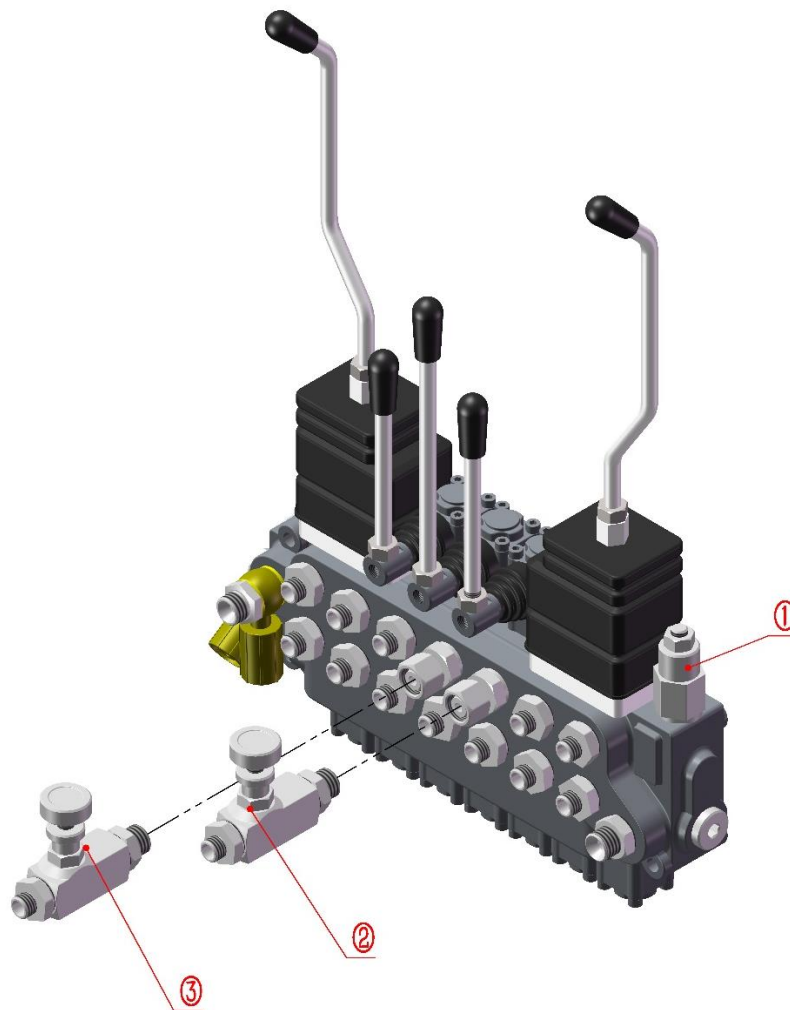
Warranty terms vary from places due to geographical settings.

Manufacturer does not respond for end user's warranty claim.



# Multi-Control Valves

Crane hydraulic system consists of oil pump, multi-control valve relief valve balance valve, oscillating cylinder, orbital hydraulic motor, grapple rotator and seven pieces of linear cylinders. Multi-control valves arrays as following:



1、 Pressure of relief valve is 10Mpar-12Mpar. Please adjust relief valve or increase engine speed for compression to lift heavier weights.

Relief valve IS in right sight of multi-control valve. Take away the cap (①), Clockwise is adding to pressure, Anticlockwise is reducing pressure.

2、 In initial starting or in the long stopping status, there is air in hydraulic system, valves can' t work accordingly. It will work well for a while when air IS out.

3、 Adjust the speed of rotation and descent of crane with throttle valve (②、 ③) .

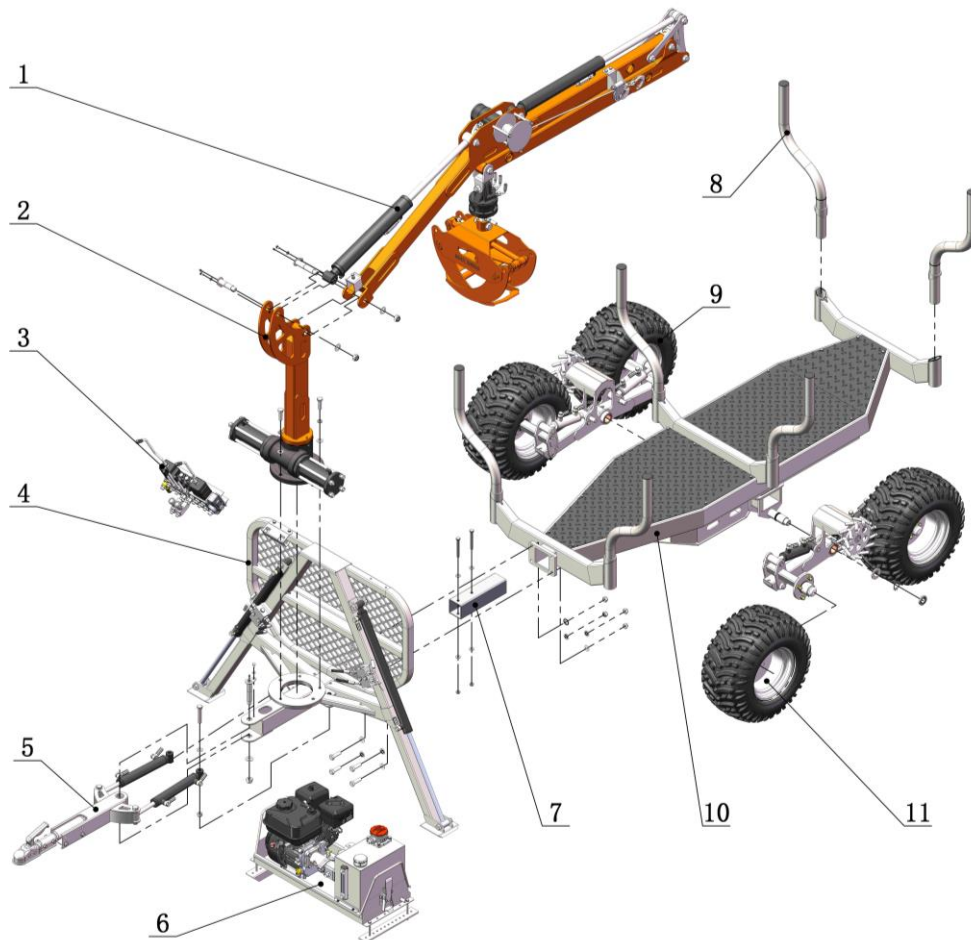
# Service and Maintenance

Parts	Lubrication material	period
	Lithium Grease	Every 50 working hours
	Lithium Grease	Every 30 working hours
	Lubricants NO.20	Every 100 working hours
	Special Lithium-based	Every 12 months

# Fault Diagnosis and Rule Out

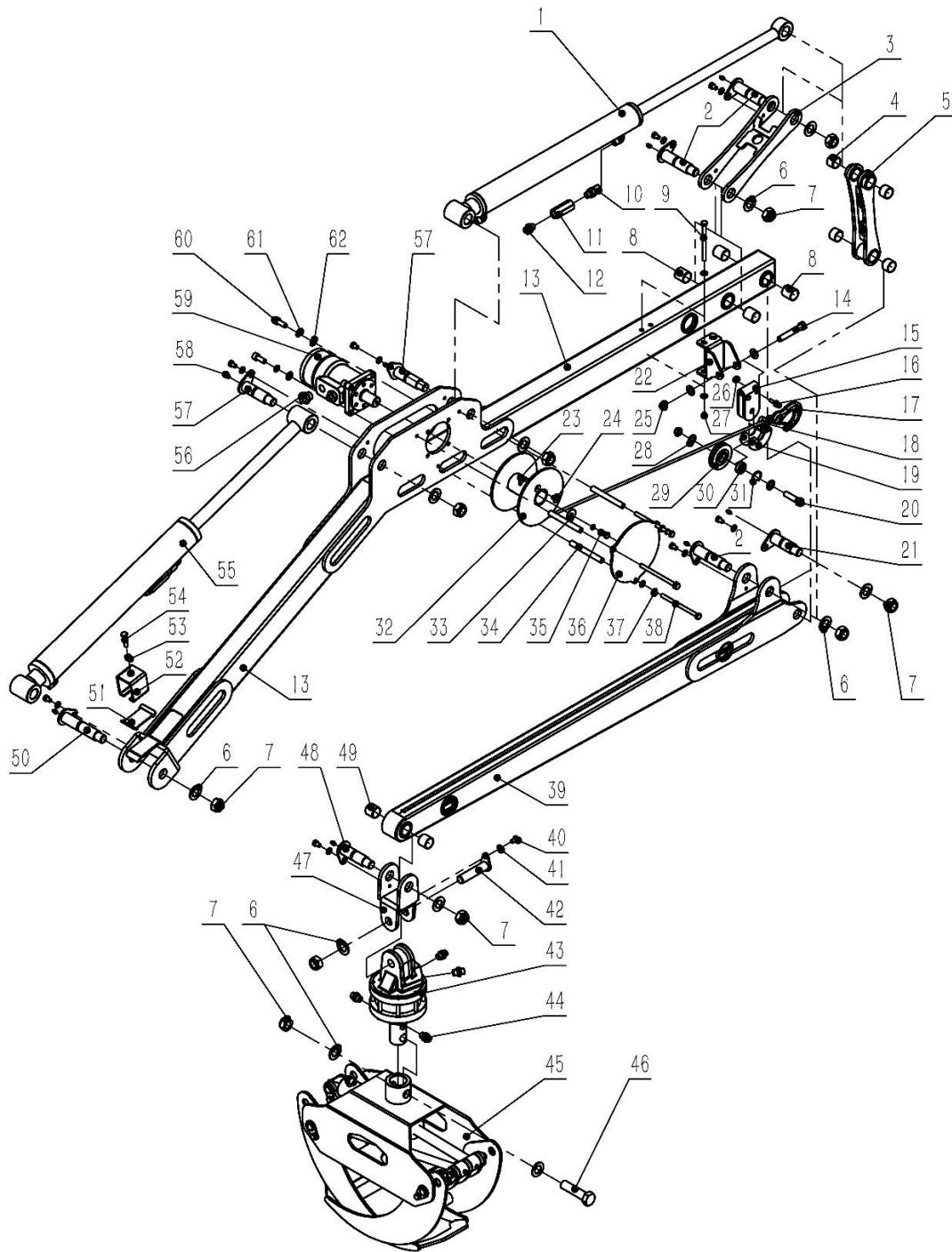
Phenomenon	Causes	Solutions
Oil pump voice anomaly	Air in cylinder	Move valves slightly to let air out
Boom lifts and declines automatically	Air in system	Tighten seal nuts in hoses
Crane can't lift weights	Too low pressure in relief valves	Regulating relief valves
Lift arm moves unstably	Short of hydraulic oil	Add more hydraulic oil
Engine flameout	Log overweight	Regulate engine speed or Lower pressure of relief valves
Interface leakage	Arc tooth seal deformed by temperature or plane seal damaged	Tighten nut or change plane seals

# Exploded View



<b>GENERAL ASSEMBLY</b>			
<b>NO.</b>	<b>Drawing No</b>	<b>Part name</b>	<b>Qty.</b>
1	LC350-01	Crane	1
2	LC350-02	Support frame	1
3	LC350-03	Multi-control valves	1
4	LC350-04	Front Protective Grid Frame	1
5	LC 350-05	Steering auxiliary component	1
6	LC 350-06	Hydraulic power unit	1
7	LC 350-07	Connecting pipe	1
8	LC 350-08	Protective tube	6
9	LC 350-09	Wheel carrier assembly	1
10	LC 350-010	Trailer main frame	1
11	LC 350-011	Tire (Right)	2

# 1.LC350-01 Crane

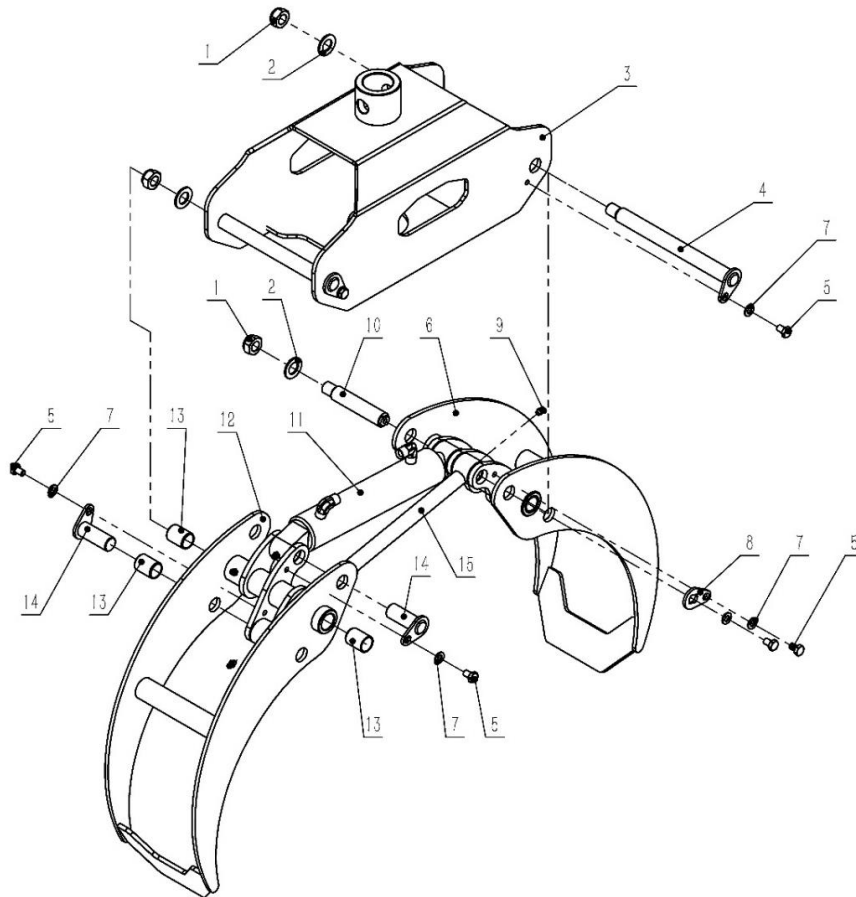


<b>LC350-01 Crane</b>			
<b>NO.</b>	<b>Drawing No</b>	<b>Part name</b>	<b>Qty.</b>
1	85 . 7115 . 852	Medium arm cylinder	1
2	31 . 7115 . 322	Connecting pin shaft welding I	3
3	31 . 7115 . 345	Medium arm cylinder support	1
4	61 . 7115 . 606	copper sheathing 252825	4
5	31 . 7115 . 325	Middle arm link	1
6	GB / T 97.1-2002	Flat mat 20	11
7	GB / T 889.1-2000	Lock nut M20	10
8	61 . 7115 . 606	Copper sleeve 252825	4
9	GB / T 5782-2000	Hex bolt M8X105	2
10	76 . 7115 . 7640	M14X1.5-3/8 union	2
11	76 . 7130 . 769	Explosion proof valve	2
12	76 . 7115 . 7641	Straight joint M14-3/8	2
13	31 . 7115 . 311	Middle arm	1
14	GB / T 5782-2000	Hex bolt M12x75	1
15	21 . 7130 . 281	Pulley mounting plate	1
16	GB / T 5782-2000	Hex bolt M6X30	2
17	81 . 7130 . 802	Winch wire rope (hook)	1
18	GB / T 825-1988	Eyebolt M8	1
19	21 . 7130 . 280	Wire rope limit plate	1
20	GB / T 5783-2016	Hex bolt M12x45	1
21	31 . 7115 . 322	Shaft weldment II	1
22	21 . 7115 . 277	Pulley fixing seat	1
23	21 . 7130 . 278	Wirerope press plate	1
24	GB / T 70.3-2008	Hex countersunk screw M8x12	1
25	GB / T 889.1-2000	Lock nut M12	2
26	GB / T 889.1-2000	Lock nut M6	2
27	GB / T 889.1-2000	Lock nut M8	3
28	GB / T 97.1-2002	Flat washer 12	4
29	11 . 7130 . 149	Pulley part	1
30	GB/T 276-2013	Ball bearing [6001-2RS]	1



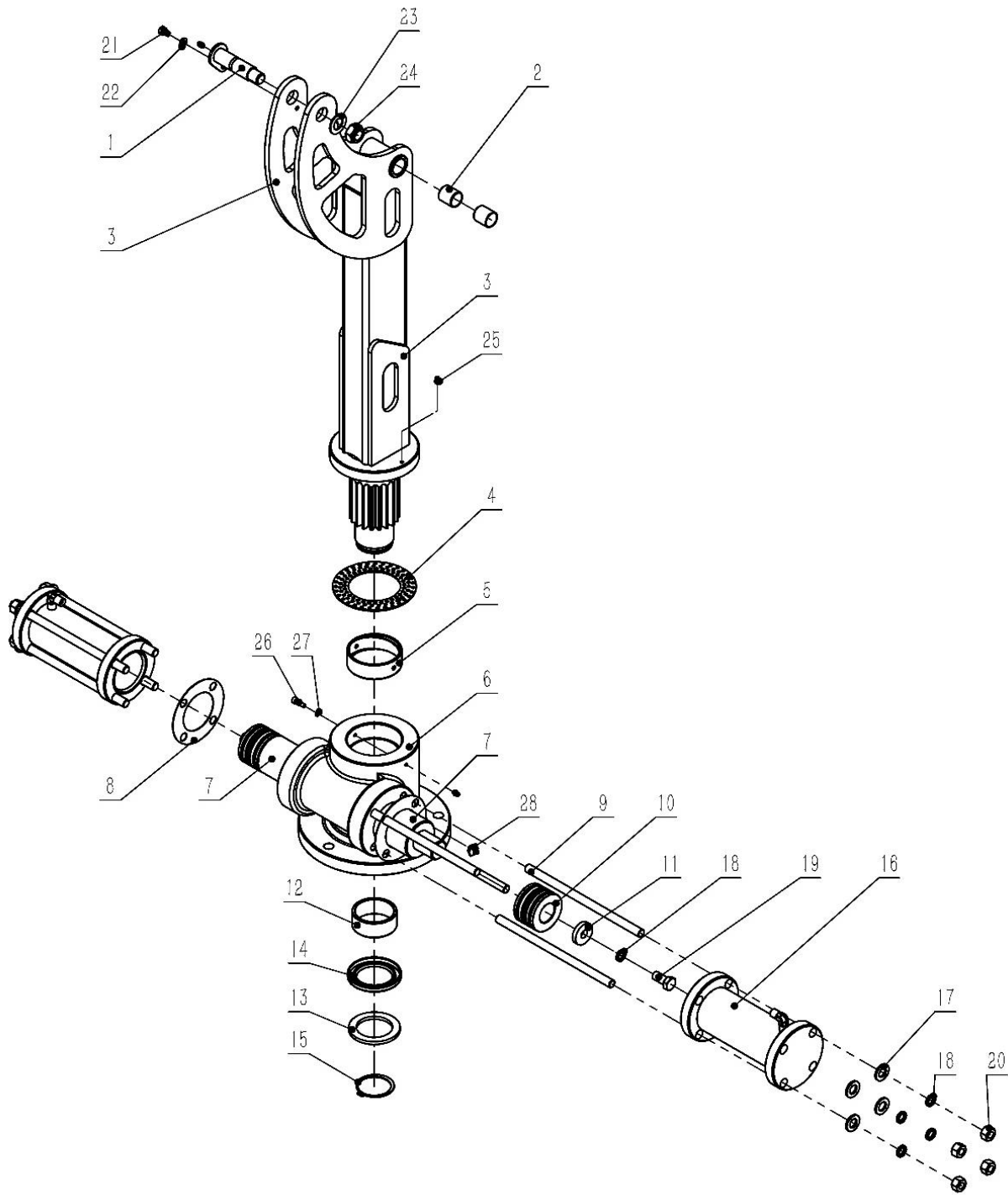
31	GB / T 893-2017	Circlip for hole 28	1
32	31 . 7130 . 340	Winch weldment	1
33	GB / T 5287-2002	Extra large washer 8	1
34	11 . 7130 . 151	Winch liner	3
35	GB / T 5783-2000	Hex bolt M8X20	1
36	21 . 7130 . 283	Winch guard	1
37	GB / T 93-1987	Spring washer 8	4
38	GB / T 5782-2000	Hex bolt M8X120	3
39	31 . 7115 . 313	Front arm	1
40	GB / T 5783-2000	Hex bolt M8X12	9
41	GB / T 97.1-2002	Flat washer 8	17
42	31 . 7130 . 332	Shaft for lifting part I	1
43	86 . 7130 . 861	Rotation motor	1
44	76 . 7130 . 7604	Straight joint M14	6
45	99 . 7125 . 901	Grappler	1
46	GB / T 5782-2000	Hex bolt M20x80	1
47	31 . 7115 . 330	Lifting part	1
48	31 . 7115 . 392	Shaft for lifting part III	1
49	61 . 7115 . 606	Copper sleeve 252825	2
50	31 . 7115 . 1102	Shaft for vertical arm II	1
51	21 . 7115 . 2702	Tube pressing plate	1
52	31 . 7115 . 2705	Fixed sleeve	1
53	GB / T 6170-2000	Hex nut M8	1
54	GB / T 5783-2000	Hex bolt M8X35	1
55	85 . 7115 . 851	Hydraulic cylinder	1
56	76 . 7130 . 7605	Straight joint M18-M14	2
57	31 . 7130 . 333	Shaft for lifting part II	2
58	JB / T 7940.1-1995	Force filling oil cup M6	8
59	86 . 101 . 863	Hydraulic motor for winch	1
60	GB / T 70.1-2008	Hex bolt M10X25	4
61	GB / T 859-1987	Spring washer 10	4
62	GB / T 97.1-2002	Flat washer 10	4

# LC350-01-45 Grappler



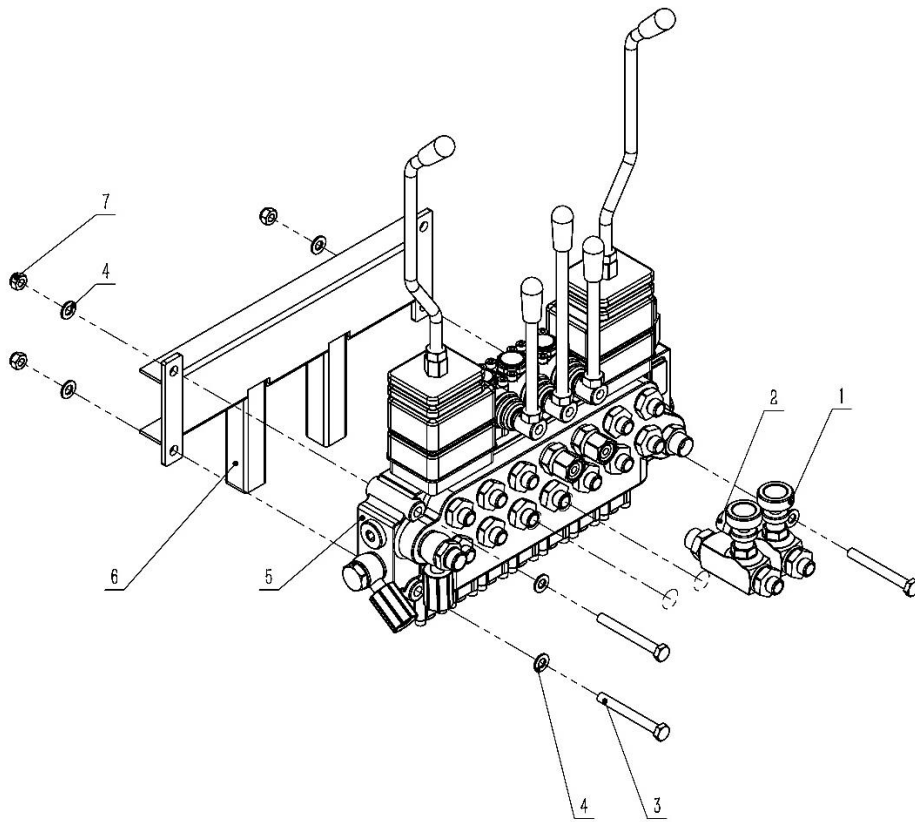
LC350-01-45 Grappler			
NO.	Drawing No	Part name	Qty.
1	GB / T 889.1-2000	Lock Nut M16	3
2	GB / T 97.1-2002	Flat Washer 16	3
3	31 . 7125 . 325	Grab	1
4	31 . 7125 . 358	Shaft for grab	2
5	GB / T 5783-2000	Hex bolt M8X12	6
6	31 . 7115 . 334	Grab I	1
7	GB / T 97.1-2002	Flat Washer 8	6
8	21 . 7125 . 262	Cylinder plate T	1
9	JB / T 7940.1-1995	Force filling oil cup M6	8
10	11 . 7125 . 159	Cylinder shaft II	1
11	85 . 7125 . 857	Hydraulic cylinder	1
12	31 . 7115 . 335	Grab II	1
13	61 . 7115 . 604	Copper sleeve 232025	6
14	31 . 7125 . 357	Cylinder shaft I	2
15	31 . 7125 . 356	Connecting rod	1

## 2.LC350-02 Support Frame



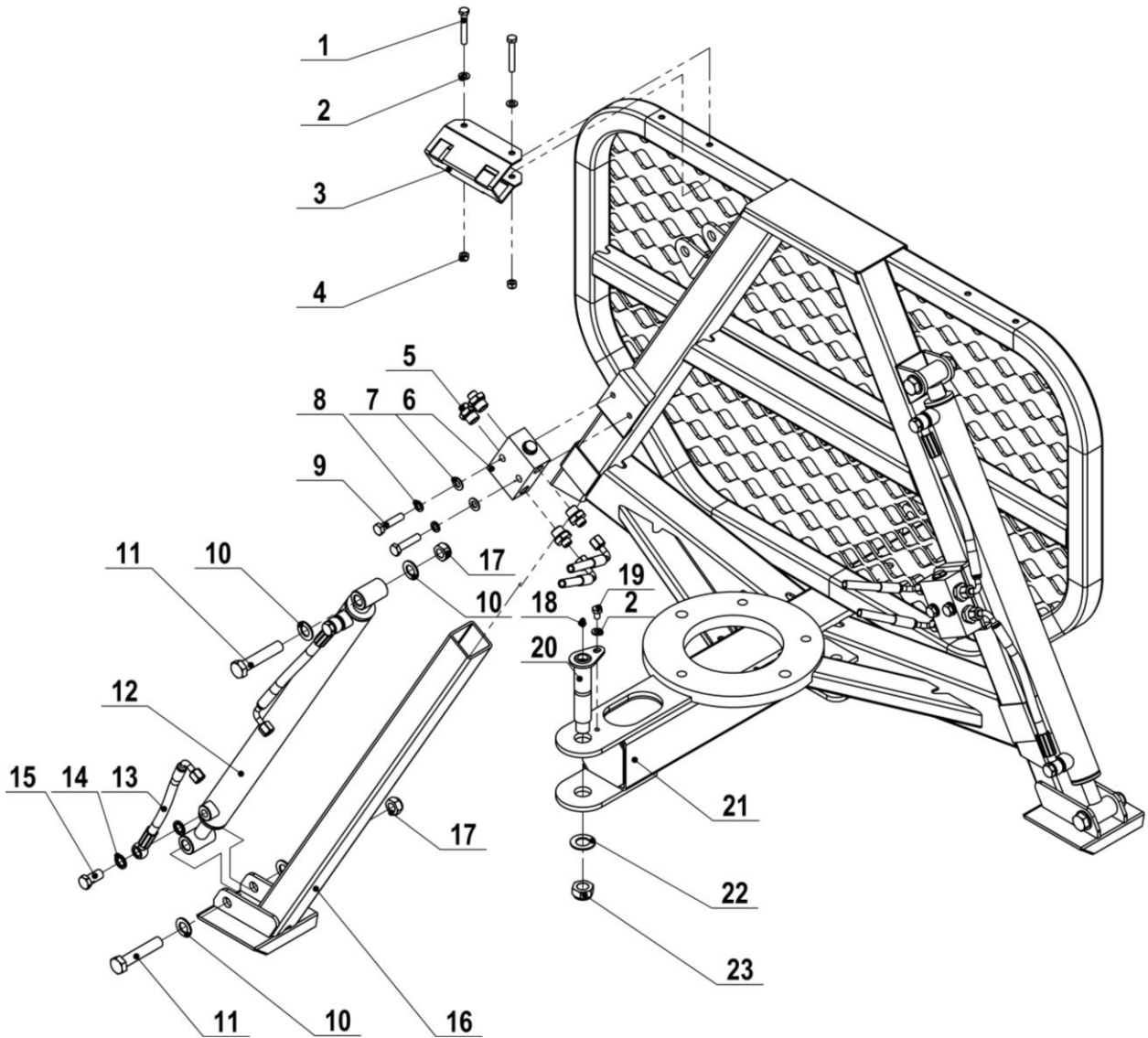
<b>LC350-02 support frame</b>			
<b>NO.</b>	<b>Drawing No</b>	<b>Part name</b>	<b>Qty.</b>
1	31 . 7115 . 1101	Vertical arm shaft I	1
2	61 . 7115 . 606	Copper sleeve 252825	2
3	31 . 7115 . 312	Vertical arm	1
4	61 . 7130 . 603	Wear resistant support pad	1
5	61 . 7115 . 601	Copper sleeve 928530	1
6	63 . 7130 . 631	Bearing seat	1
7	11 . 7115 . 107	Drive rack shaft	1
8	48 . 7130 . 481	Cylinder seal	2
9	11 . 7130 . 199	Cylinder rod	8
10	85 . 7130 . 852	Cylinder piston	2
11	21 . 7130 . 2108	Cylinder piston seal	2
12	61 . 7115 . 602	Copper sleeve 726530	1
13	21 . 7130 . 224	flat gasket under gear shaft	1
14	TC	Seal 65x90x10	1
15	GB / T 894-2017	External Circlips 60	1
16	85 . 7130 . 851	Cylinder tube	2
17	GB / T 97.1-2002	Flat Washer 14	8
18	GB / T 93-1987	Spring Washer 14	10
19	GB / T 5783-2000	Hex Bolt M14x30	2
20	GB / T 6170-2000	Hex Nut M14	8
21	GB / T 5783-2000	Hex bolt M8X12	1
22	GB / T 97.1-2002	Flat Washer 8	1
23	GB / T 97.1-2002	Flat Washer 20	1
24	GB / T 889.1-2000	Lock Nut M20	1
25	JB / T 7940.1-1995	Force filling oil cup M6	4
26	GB / T 70.1-2008	Hex bolt M6X20	1
27	GB / T 93-1987	Spring Washer 6	1
28	JB / T 7940.1-1995	Force filling oil cup M14x1.5	1

### 3.LC350-03 Multi-Way Control Valve



LC350-03Multi-Control Valves			
NO.	Drawing No	Part name	Qty
1	L-8HL	Throttle valve (two ways)	1
2	L(A)-8HL	Throttle valve (one way)	1
3	GB / T 5782-2000	Hex bolt M8X70	3
4	GB / T 97.1-2002	Flat washer 8	6
5	76 . 7115 . 7618	7ways valve	1
6	31 . 7115 . 350	Valve mounting seat	1
7	GB / T 889.1-2000	lock nut M8	3

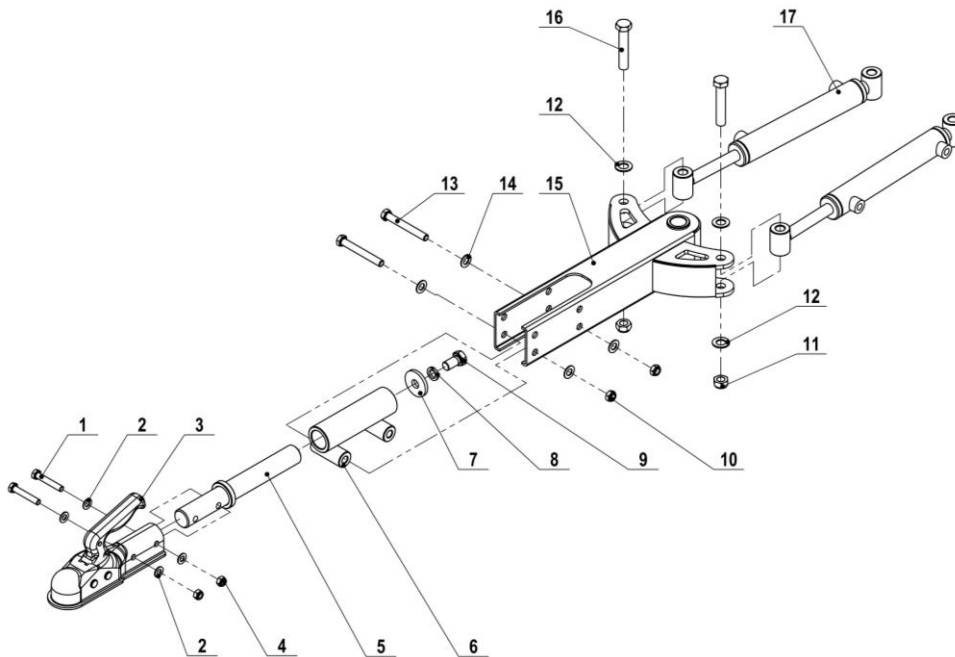
## 4.LC350-04 Front Protective Grid Frame





<b>LC350-04 Front Protective Grid Frame</b>			
<b>NO.</b>	<b>Drawing No</b>	<b>Part name</b>	<b>Qty.</b>
1	GB / T 5782-2000	Hex Bolt M8X55	2
2	GB / T 97.1-2002	Flat Washer 8	3
3	21. 7115. 2701	Multi-way valve seat fixing plate	1
4	GB / T 889.1-2000	Lock Nut M8	2
5	76. 7130. 7605	Straight M18-M14	8
6	76. 7130. 761	Hydraulic Lock H8L	2
7	GB / T 97.1-2002	Flat Washer 10	4
8	GB / T 859-1987	Spring Washer 10	4
9	GB / T 5782-2000	Hex Bolt M10X45	4
10	GB / T 97.1-2002	Flat Washer 16	8
11	GB / T 5782-2000	Hex Bolt M16x80	4
12	85. 7115. 853	Leg Cylinder	2
13	73. 7715. 7303	Tubing /A	4
14	JB982-77	Combined Washerφ14	8
15	76. 7130. 7612	Hollow Bolt M14X1.5	4
16	31. 7115. 353	Leg inner sleeve weldment	2
17	GB / T 889.1-2000	Lock Nut M16	4
18	JB / T 7940.1-1995	Hydraulic Oil Cup M6	1
19	GB / T 5783-2000	Hex Bolt M8X12	1
20	31. 7325. 1701	Turning Pin Weldment	1
21	31. 7715. 317	Grid Frame Weldment	1
22	GB / T 97.1-2002	Flat Washer 20	1
23	GB / T 889.1-2000	Lock Nut M20	1

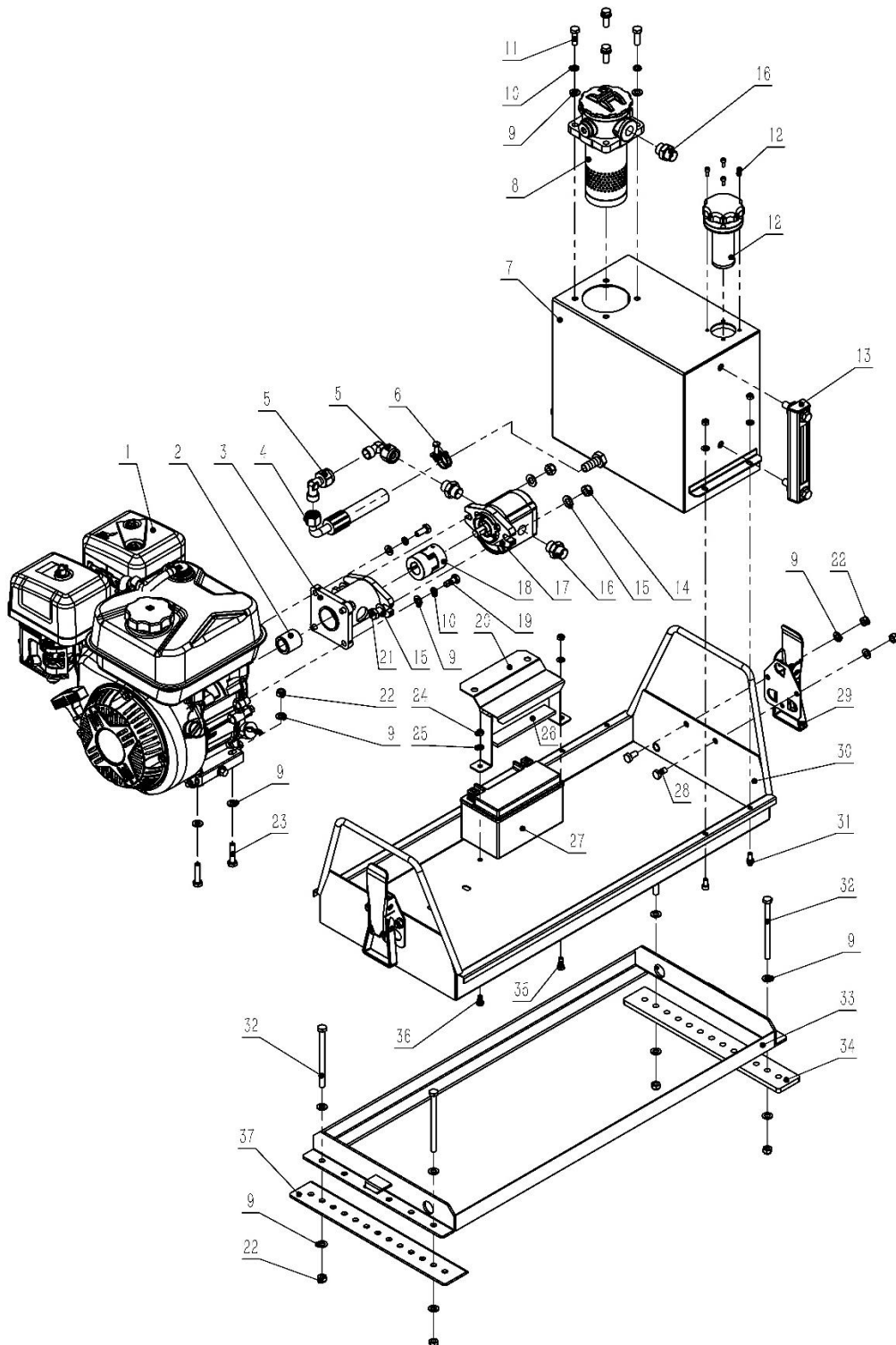
## 5.LC350-05 Steering auxiliary component



LC350-05 Steering auxiliary component			
NO.	Drawing No	Part name	Qty.
1	GB / T 5783-2000	Hex Bolt M10X60(12.9)	2
2	GB / T 97.1-2002	Flat Washer 10	4
3	72 . 6031 . 729	Trailer Cover	1
4	GB / T 889.1-2000	Lock Nut M10	2
5	31 . 7130 . 343	Tow Bar	1
6	31 . 7115 . 351	Traction rod shaft sleeve weldment	1
7	21 . 7130 . 284	Traction shaft gasket	1
8	GB / T 93-1987	Spring Washer 16	1
9	GB / T 5783-2016	Hex Bolt M16x30	1
10	GB / T 889.1-2000	Lock Nut M12	2
11	GB / T 889.1-2000	Lock Nut M16	2

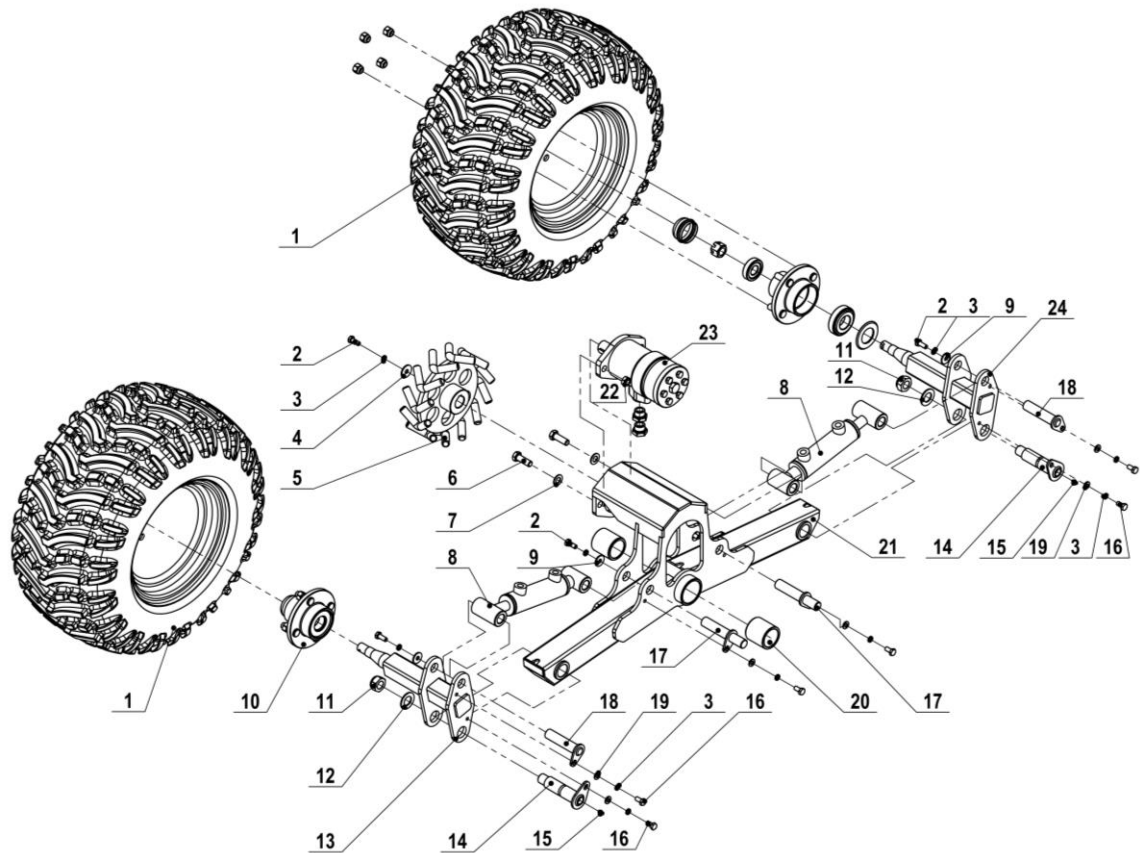
12	GB / T 97.1-2002	Flat Washer 16	4
13	GB / T 5782-2000	Hex Bolt M12X95	2
14	GB / T 97.1-2002	Flat Washer 12	4
15	31 . 7715 . 381	Trailer Fixing Pipe Weldment	1
16	GB / T 5782-2000	Hex Bolt M16x85	2
17	85 . 7715 . 858	Auxiliary Steering Cylinder	2

## 6.LC350-06 power unit



<b>LC350-06 power unit</b>			
<b>NO.</b>	<b>Drawing No</b>	<b>Part name</b>	<b>Qty.</b>
1	DH196CC	7HP gasoline engine	1
2	11 . 7130 . 172	Crankshaft spacer	1
3	31 . 7125 . 346	Coupling shell	1
4	73 . 7115 . 7301	Tube /A	1
5	76 . 7115 . 7616	Right angle joint M18	2
6	QC / T 619-19100	Double wire clamp d22	1
7	31 . 7115 . 932	Oil tank	1
8	76 . 7115 . 769	Filter RFA-25	1
9	GB / T 97.1-2002	Flat Washer 8	28
10	GB / T 93-1987	Spring Washer 8	8
11	GB / T 5783-2000	Hex Bolt M8x25	4
12	76 . 7115 . 768	Filter for oil inlet port	1
13	76 . 7130 . 760	Dipstick YWZ-150T	1
14	GB / T 889.1-2000	Lock nut M10	2
15	GB / T 97.1-2002	Flat Washer 10	4
16	76 . 7130 . 7602	Straight joint M18X1.5	3
17	86 . 7325 . 862	Pump CBD-F3.5	1
18	77 . 7115 . 771	Coupling 20-12-50	1
19	GB / T 5783-2000	Hex Bolt M8X20	4
20	31 . 7115 . 931	Battery pressing plate	1
21	GB / T 5783-2000	Hex Bolt M10x35	2
22	GB / T 889.1-2000	Locking Nut M8	12
23	GB / T 5783-2000	Hex bolt M8x35	4
24	GB / T 889.1-2000	Lock Nut M6	6
25	GB / T 97.1-2002	Flat Washer 6	8
26	43 . 7115 . 432	Damping rubber strip	1
27	87 . 7115 . 877	Battery	1
28	GB / T 5783-2000	Hex Bolt M8X16	4
29	72 . 7115 . 721	Hasp	2
30	31 . 7115 . 997	Power units frame	1
31	GB / T 70.1-2008	Hex Bolt M6x12	4
32	GB / T 5783-2000	Hex Bolt M8x110	4
33	31 . 7115 . 355	Mounting plate for power units	1
34	21 . 7115 . 214	Fixing plate for power units I	1
35	GB / T 5783-2000	Hex Bolt M6x16	1
36	GB / T 5783-2000	Hex Bolt M6x12	1
37	21 . 7115 . 215	Fixing plate for power units II	1

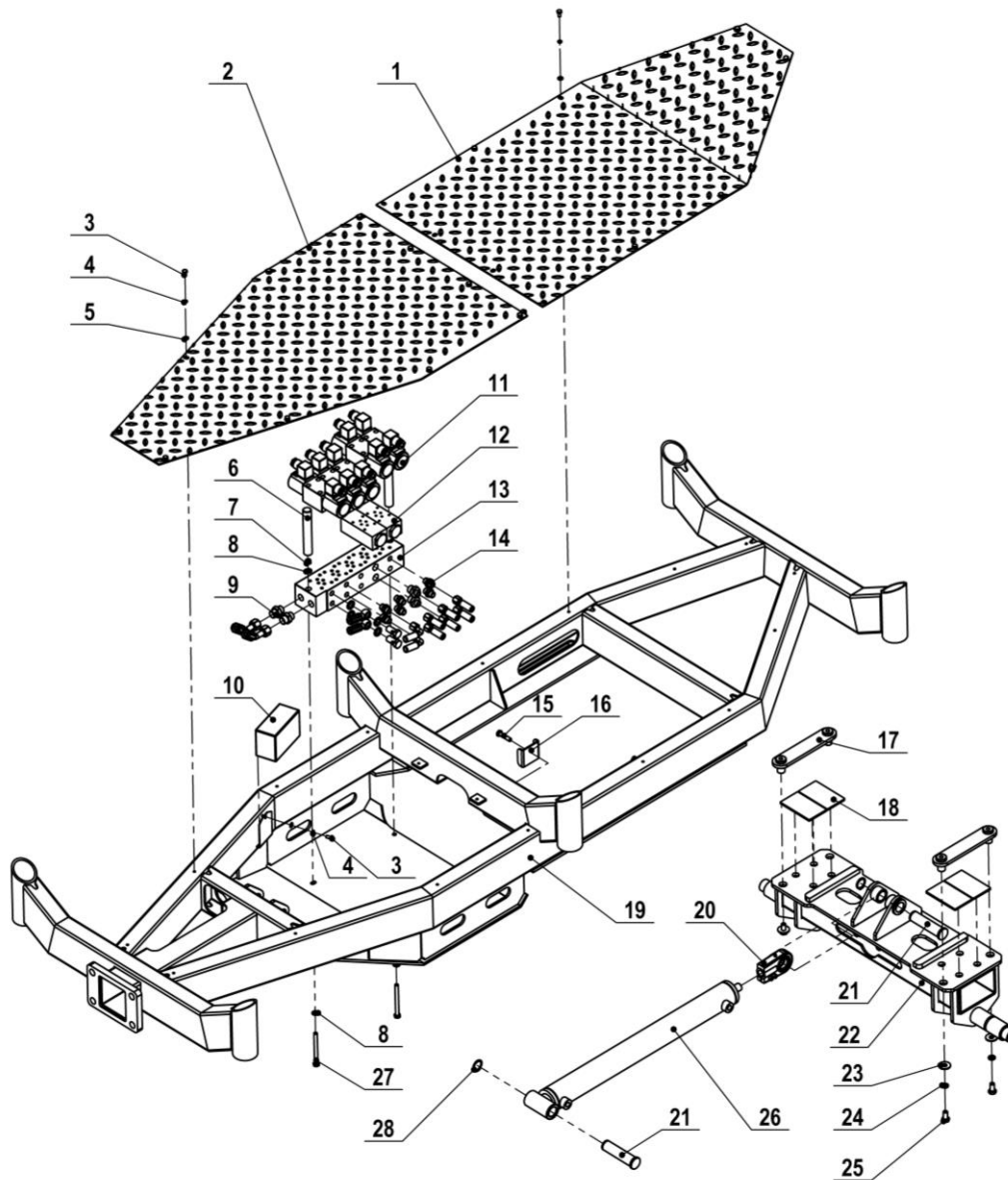
## 7.LC350-09 Wheel Carrier Assembly



LC350-09 Wheel Carrier Assembly			
NO.	Drawing No	Part name	Qty.
1	45. 7115. 451	tire (left)	2
2	GB / T 5783-2000	Hex Bolts M8X20	5
3	GB / T 93-1987	Spring Washer 8	11
4	GB / T 5287-2002	Extra Large Washer 8	1
5	31. 7115. 360	drive wheel weldment II	1
6	GB / T 5782-2000	Hex Bolt M12X35	2
7	GB / T 97.1-2002	Flat Washer 12	2
8	85. 7715. 854	drive wheel cylinder	2

9	GB / T 96.1-2002	Flat Washer 8	4
10	99. 7115. 72	Hub	2
11	GB / T 889.1-2000	Lock nut M20	2
12	GB / T 97.1-2002	Flat Washer 20	2
13	31. 7715. 388	Axle Welded Parts II	1
14	31. 7115. 322	connecting pin I	2
15	JB / T 7940.1-1995	hydraulic oil cup M6	3
16	GB / T 5783-2000	Hex Bolt M8X16	6
17	31. 7715. 382	Axle frame limit pin	2
18	31. 7715. 385	4X4-wheel drive cylinder pin II	2
19	GB / T 97.1-2002	Flat Washer 8	6
20	61. 7715. 605	Copper sets 4050	2
21	31. 7715. 383	Axle frame weldment	1
22	GB / T 889.1-2000	Lock nut M12	2
23	86. 7115. 863	hydraulic motor BM1-160	1
24	31. 7715. 384	Axle Welded Parts I	1

## 8.LC350-10 Trailer main frame parts



LC350-10 Trailer main frame parts			
NO.	Drawing No	Part name	Qty.
1	21. 7715. 2323	Trailer rear cover	1
2	21. 7715. 2322	Trailer front cover	1
3	GB / T 5783-2000	Hex Bolt M6×12	23



4	GB / T 93-1987	Spring Washer 6	23
5	GB / T 97.1-2002	Flat Washer 6	23
6	11. 7715. 1006	Anti-collision shaft	2
7	GB / T 889.1-2000	Lock nut M8	2
8	GB / T 97.1-2002	Flat Washer 8	6
9	76. 7130. 7602	Straight M18X1.5	4
10	46. 7130. 461	Receiver Remote Control Kit	1
11	76. 7715. 7619.2	The electromagnetic valve	5
12	76. 7715. 7620	pressure-retaining valve	2
13	76. 7715. 7619.1	oil block	1
14	76. 7130. 7604	Straight M14	6
15	GB / T 5783-2000	Hex BoltM8x35	1
16	21. 7715. 2782	Oil pipe fixing plate	1
17	31. 7715. 386	sliding stop	2
18	43. 7130. 431	Wear pad	4
19	31. 7715. 371	trailer main frame	1
20	GK	Cylinder earringsGK25SK	1
21	11. 7715. 1005	Sliding seat cylinder pin	2
22	31. 7715. 387	Sliding seat	1
23	GB / T 97.1-2002	Large Washer10	4
24	GB / T 859-1987	Spring Washer 10	4
25	GB / T 5782-2000	Hex Bolt M10x20	4
26	85. 7715. 878	Wheel adjustment cylinder r	1
27	GB / T 5782-2000	Hex Bolt M8X90	2
28	GB / T 894.1-1986	Circlips 25	2

# NOTES

---

---

---

---

---

---

---

---

---

---

---

---

---

---

---

---

---

---

---

---

---

---

---

---

---

---

---

---